

PERMETROL LAWN INSECTICIDE

GRANULES

Contains .5% Permethrin

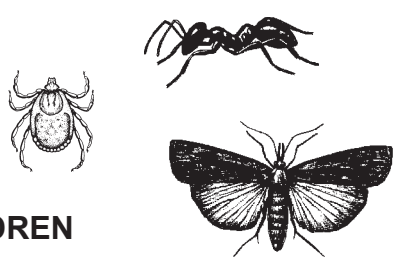


- * Ready to Use
- * 4 pounds treats 2,000 sq. ft.

ACTIVE INGREDIENT:

*Permethrin	0.5%
INERT INGREDIENTS:	99.5%
	100.0%

*(3-phenoxyphenyl) methyl (+/-) is/trans 3-(2,2-dichloroethyl)
2,2-dimethyl-cyclopropanecarboxylate.
Cis/trans ratio: Min. 35% (+/-) cis and max. 65% (+/-) trans.



KEEP OUT OF REACH OF CHILDREN CAUTION

First Aid

IF IN EYES: Hold eye open and rinse slowly and gently with water for 15-20 minutes. Remove contact lenses, if present, after the first 5 minutes, then continue rinsing eye. Call a poison control center or doctor for treatment advice. For information on this pesticide product (including health concerns, medical emergencies, or pesticide incidents), call the National Pesticide Information Center at 1-800-858-7378. Have the product container or label with you when calling a poison control center or doctor, or going for treatment.

STORAGE & DISPOSAL

Storage: Store product in its original container in a cool, dry, locked place out of reach of children.

Pesticide Disposal and Container Handling: Nonrefillable container. Do not reuse or refill this container.

If Empty: Do not reuse this container. Place in trash or offer for recycling if available.

If Partly filled: Call your local solid waste agency or 1-800 CLEANUP for disposal instructions. Never place unused product down any indoor or outdoor drain.

PRECAUTIONARY STATEMENTS

Hazards to Humans and Domestic Animals

CAUTION: Causes moderate eye irritation. Avoid contact with eyes or clothing. Wash thoroughly with soap and water after handling and before eating, drinking, chewing gum, using tobacco or using the toilet.

Environmental Hazards

This product is extremely toxic to aquatic organisms, including fish and invertebrates. To protect the environment, do not allow pesticide to enter or run off into storm drains, drainage ditches, gutters or surface waters. Applying this product in calm weather when rain is not predicted for the next 24 hours will help to ensure that wind or rain does not blow or wash pesticide off the treatment area. Sweeping any product that lands on a driveway, sidewalk, or street, back onto the treated area of the lawn or garden will help to prevent run off to water bodies or drainage systems. This pesticide is highly toxic to bees exposed to direct treatment on blooming crops or weeds. Do not apply this product or allow it to drift to blooming crops or weeds while bees are actively visiting the treatment area.

DIRECTIONS FOR USE

It is a violation of Federal law to use this product in a manner inconsistent with its labeling. READ ENTIRE LABEL. USE STRICTLY IN ACCORDANCE WITH LABEL PRECAUTIONARY STATEMENTS AND DIRECTIONS. Do not apply this product in a way that will contact adults, children, or pets, either directly or through drift. Remove pets, birds, and cover fish aquariums before spraying. Apply this product directly to the lawn or flower garden. Water treated area as directed on this label. Do not water to the point of run-off. Do not make applications during rain. Application is prohibited directly into sewers or drains, or to any area like a gutter where drainage to sewers, storm drains, water bodies, or aquatic habitat can occur. Do not allow the product to enter any drain during or after application. Not for sale on plants being grown for sale or other commercial use or for commercial seed production or for research purposes. Food utensils such as teaspoons or measuring cups should not be used for food purposes after use with pesticides.

Southern Agricultural Insecticides, Inc.

Palmetto, FL 34220 Hendersonville, NC 28793 Boone, NC 28607

EPA Reg. No. 829-296 J3 **Net Weight: 4 lb. (1.81 kg.)**

Do not allow adults, children or pets to enter the treated area until dusts have settled. Permetrol Lawn Insecticide Granules is used to control lawn insects, fleas and ticks outdoors in residential areas. Repeated applications are made by broadcast treatment with a spreader to lawns, under shrubbery, and other ornamental and turf grass areas, apply band treatments around house foundations and spot applications are made to ant mounds and wasp nests.

FOR ALL TREATMENTS

1. Determine size of area to be treated - measure and multiply length times width.
2. Determine appropriate spreader setting using chart.
3. Treated as directed - thorough coverage is important. Water in where indicated.
4. Keep children and pets off treated areas until this material is washed into turf and grass is dry.
5. All outdoor applications must be limited to spot or crack-and-crevice treatments only, except for the following permitted uses: a) Treatment to soil or vegetation around structures; b) Applications to lawns, turf, and other vegetation; c) Applications to building foundations, up to a maximum height of 3 feet.

OVERALL LAWN TREATMENT FOR GRASS AND DICHONDRA LAWNS

To control *Ants, Army worms (including Fall, Yellow-Striped, etc.), Bermudagrass mites, Billbugs (adult), Boxelder Bugs, Centipedes, Chiggers, Chinch Bugs, Clover mites, Cockroaches, Crickets, Cutworms, Darkling Ground Beetles, Digger wasps, Essex Skipper, European Crane Fly Larvae, Field Crickets, Fiery Skipper, Flea Beetle (in dichondra), Grasshopper, Hyperodes (Turfgrass Weevil), Japanese Beetle (adult), Lawn Moths, Leafhoppers, Scorpions, Silverfish & Firebrats, Sod Webworms, Sowbugs, Spiders (including Black Widow), Spittlebugs, Springtails, Vegetable Weevils (in Dichondra)*; Apply this product uniformly to home lawns, under shrubbery, and other ornamental recreational turf grass areas. Treat when insects first appear using granules at the rate of 2 pounds per 1,000 sq. ft. or, for heavy lawns such as St. Augustine grass, 3 pounds per 1,000 sq. ft. using a fertilizer spreader. See spreader setting chart below. To help obtain uniform distribution, apply one-half required amount of product in one direction, then apply the balance at a right angle. Immediately after application, water the lawn lightly.

European Crane fly larvae (Leatherjackets - the best time to apply is in May or June when the insects are young).

Chinch Bugs - Start treatments when temperatures reach 80° F or above. A second application may be necessary in 6 weeks if insect activity continues.

FLEA AND TICK CONTROL (OUTDOORS)

In summer months, fleas and ticks frequently become established in lawns and pet resting areas surrounding the home. For best control of *Fleas and Ticks (including but not limited to Bear Tick, Black-legged Tick, Brown Dog Tick, Deer Tick (ixodes dammini), Lone Star Tick, Western Black-legged Tick, Wood Tick)*; a regular treatment program should be followed. Treat once a month when pests first appear in late spring (May - June) and continue until late summer (September -October). Fall temperatures below 50°F decrease pest activity. Eliminating weeds around the home and mowing lawns frequently reduces the hiding places for these pests.

Note: Dogs, cats, their kennel or bedding area should also be treated with a registered product. In addition, if fleas and ticks are indoors on carpets or pet resting areas, use a registered product such as Southern Ag Home Pest Control, ideally in combination with an Insect Growth Regulator such as Precor. It is very important that all three sites - outdoors, indoors and also the pet be treated with appropriate labeled products to achieve satisfactory control. If any of these areas is not treated, it could serve as a source of reinfestation to the entire premises.

SOD WEBWORMS (*Crambus Spp*)

Sod Webworms are the light brown caterpillars 1/4 to 3/4 inch long, that hide in the grass during the day and feed on the grass blades at night. Adult Webworms, usually referred to as Lawn Moths (about 1 inch in length with long snout) emerge from the grass at dusk. They fly over the lawn laying eggs that later hatch into destructive caterpillars. Damage appears first as small brown spots which, if not treated, may rapidly develop into large brown areas of severely damaged or dead grass. If Lawn Moths (Sod Webworm Adults) are noticed in large numbers at dusk, or at first sign of damage to lawn, treat entire lawn evenly.

BAND (PERIMETER) TREATMENT AROUND HOUSE FOUNDATION

To help prevent infestation of buildings by *Ants, Boxelder Bugs, Brown Dog Ticks, Centipedes, Cockroaches, Clover Mites, Crickets, Field Crickets, Fleas, Scorpions, Sowbugs, Spiders (including Black Widow), Springtails (Collembola) and Ticks*; treat at a rate of one pound per 500 sq. ft. or 2 lbs. per 1,000 sq. ft. Apply a 5-foot band of granules next to the house foundation. Distribute granules uniformly. Water lightly after application.

SPOT TREATMENT

ANTS NESTING OUTDOORS: This product may be used outdoors for the control of ants, including: *Acrobat, Argentine, Big Headed, Cornfield, Field, Harvester, Leafcutter, Little Black, Pavement and Pyramid Ants.* If possible, it is best to try to locate nest and treat this first. Nests will usually be found in the ground but may be concealed under stones, boards, slabs or in stumps or logs. Product should be applied to thoroughly cover the nest (1 to 2 teaspoons) and sprinkled gently with water. In addition to treating ant nests or mounds, entry points of buildings (used by ants) and the soil surface along the perimeter of the building should be treated.

DIGGER WASPS: Apply 1 to 2 teaspoons of granules in and around each individual ground nest opening. Make the application at dusk when the wasps are not active.

IMPORTED FIRE ANTS: Apply one cup over, and 2 feet around each fire ant mound. Immediately after application, water the granules into the soil gently with a light sprinkling to avoid disturbing the colony. Use at least 1 gallon of water per mound, but no more than 2 gallons. Use of high pressure watering equipment may disturb the colony and cause migration of the ants, thus reducing the effectiveness of the treatment. Apply in cool weather (65 - 80°F), or in early morning or late evening for best results. Treat new mounds as they appear.

SPREADER SETTINGS

Spreader Make and Model	Setting to Deliver:	
	2lbs/1000 ft	3 lbs/1000ft
Cyclone Broadcast	3	5
Greenview Jet Spred III	3	5
Republic Drop EZ 530	6 1/2	8
Scotts AG3	6	7
Scotts SG3	4	5
Scotts EG3	24	26
Scotts PF4	6	7
Sears Craftsman Broadcast	5 1/2	7
Sears Craftsman Drop	5 1/2	7

Note: Spreader settings given are approximate and variation can occur between identical models. User should calibrate spreader by accurately weighing a few pounds into your spreader and applying to a measured area. Then adjust spreader setting if necessary to assure correct rate of application.

IMPORTANT: READ BEFORE USE

By using this product, user or buyer accepts the following conditions, warranty, disclaimer of warranties and limitations of liability.

CONDITIONS: However, because of manner of use and other factors beyond the manufacturer's control, it is impossible for the manufacturer to eliminate all risks associated with the use of this product. To the extent consistent with applicable law all such risks shall be assumed by the user or buyer.

DISCLAIMER OF WARRANTIES: THERE ARE NO WARRANTIES, EXPRESS OR IMPLIED, OF MERCHANTABILITY OR OF FITNESS FOR A PARTICULAR PURPOSE OR OTHERWISE, WHICH EXTEND BEYOND THE STATEMENTS MADE ON THIS LABEL. No agent of Southern Agricultural Ins., Inc. is authorized to make any warranties beyond those contained herein or to modify the warranties contained herein. Southern Agricultural Ins., Inc. to the extent consistent with applicable law, disclaims any liability whatsoever for incidental or consequential damages, including, but not limited to, liability arising out of breach of contract, express or implied warranty (including warranties of merchantability and fitness for a particular purpose), tort, negligence, strict liability or otherwise.

LIMITATIONS OF LIABILITY: To the extent consistent with applicable law, the exclusive remedy of the user or buyer for any and all losses, injuries or damages resulting from the use or handling of this product, whether in contract, warranty, tort, negligence, strict liability or otherwise, shall not exceed the purchase price paid for, or, at Southern Agricultural Insecticides, election, the replacement of product.



EPA EST. NO. 829-FL-1 (3) 829-NC-1(4) 829-NC-2 (5)
Number following Est. No. corresponds to first digit in Lot No.

EPA Reg. No. 829-296

